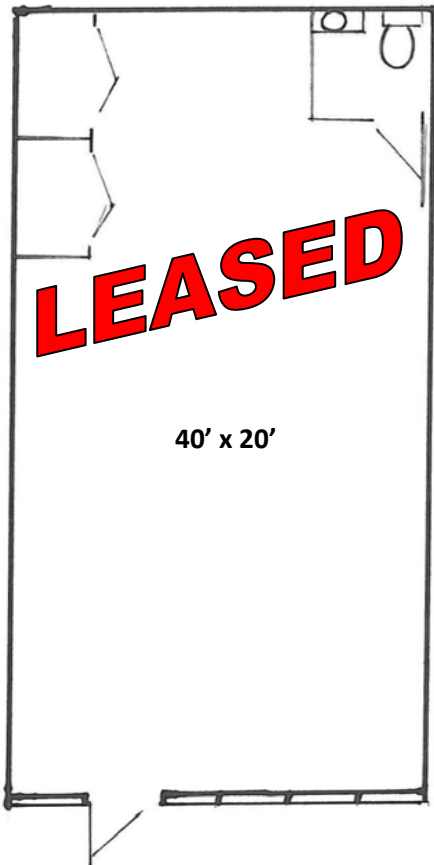
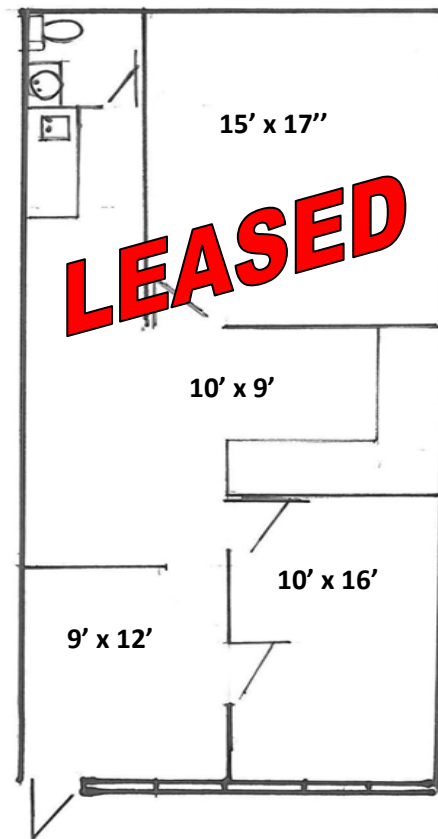


Granada Office Center



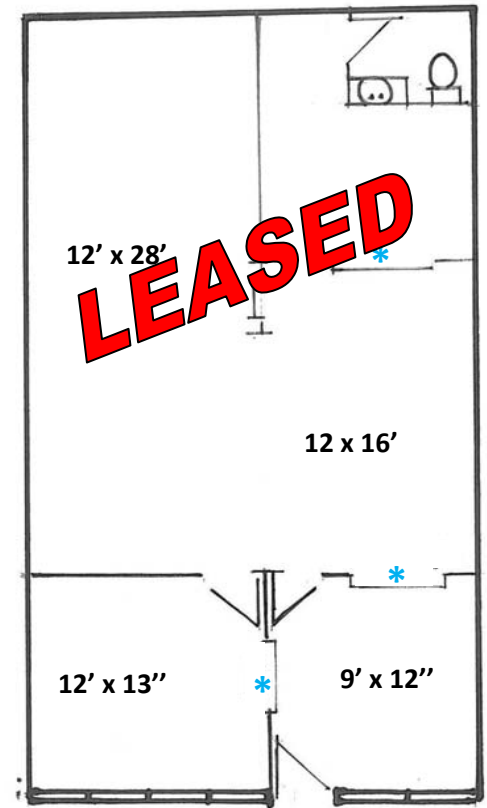
SUITE #1563

807 SF Bright and open space on 2nd floor right across from Elevator. Easy access. Ideal for retail display, or salon, or nail parlor.



SUITE #1565

809 SF Bright reception and front office. Administration offices in the back. Private bathroom, and lunch break area.



* Pass-through window

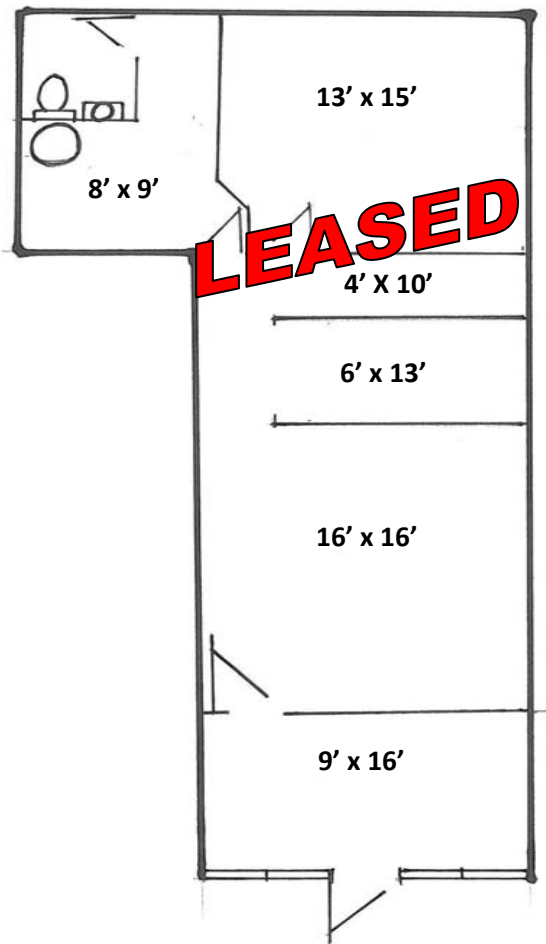
SUITE #1569

1,016 SF Bright reception and front office - large open area in the back & private bathroom.



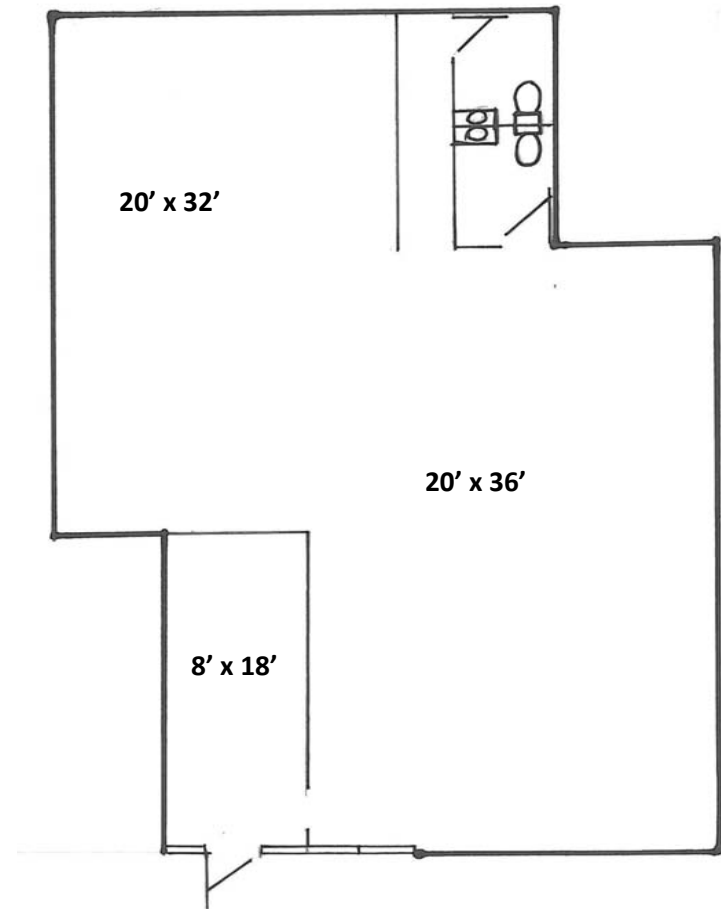
Philippe Beau (727) 409-3465

Granada Office Center



SUITE #1575

933 SF Bright and open reception – fairly open back. Can be redesigned.



SUITE #1579

1,656 SF Nice reception – Large open floorplan – 2 private bathrooms



Philippe Beau (727) 409-3465